

INFORMATION ONLY: **Revisions to College Organizational Charts**

Revisions to the organizational charts include the following:

Chadron State College

Changes in Key Personnel

- Tami Selby, Vice President Enrollment Management
- Bruce Mackh, Associate Vice President Teaching & Learning
- Tara Hart, Interim Director of Student Transition & Retention
- Todd Baumann, Director of Facilities

Changes in Reporting Line

- Alex Helmbrecht - Director of College Relations, reporting to President
- Malinda Linegar - Director of Institutional Research, reporting to Vice President Academic Affairs
- Melissa Mitchell - Registrar, reporting to Vice President Academic Affairs
- Caitlin Rovner - Director of Transitional Studies Program, reporting to Vice President Academic Affairs
- Vacant, Director of Office of Academic Success, reporting to Associate Vice President Teaching & Learning
- Director of Financial Aid, reporting to Vice President Enrollment Management
- Lisa Stein, Director of Admissions, reporting to Vice President Enrollment Management
- Tara Hart, Interim Director of Student Transitions & Retention, reporting to Vice President Enrollment Management

Position Title Changes

- Jon Hansen Dean of Student Affairs
- Director of Financial Aid
- Harold Mowry Assistant to Vice President Administration and Finance
- Pam Anderson Administrative Assistant

Unit Title Name Change

- “Teaching and Learning Center” to “Teaching, Learning and Professional Education Center”

- Will retain the reporting line to the Vice President Enrollment Management

Peru State College

New Position

- Assistant to Vice President for Administration and Finance

New Office

- One Stop - This office was created and opened to provide essential customer services to PSC students.

Wayne State College

Changes in Key Personnel

- Anne McCarthy, Associate Vice President Academic Affairs
- John Canty, Director TRIO

New Position

- Bradley Keasling, Director-Workforce & Community Education

Position Title Change

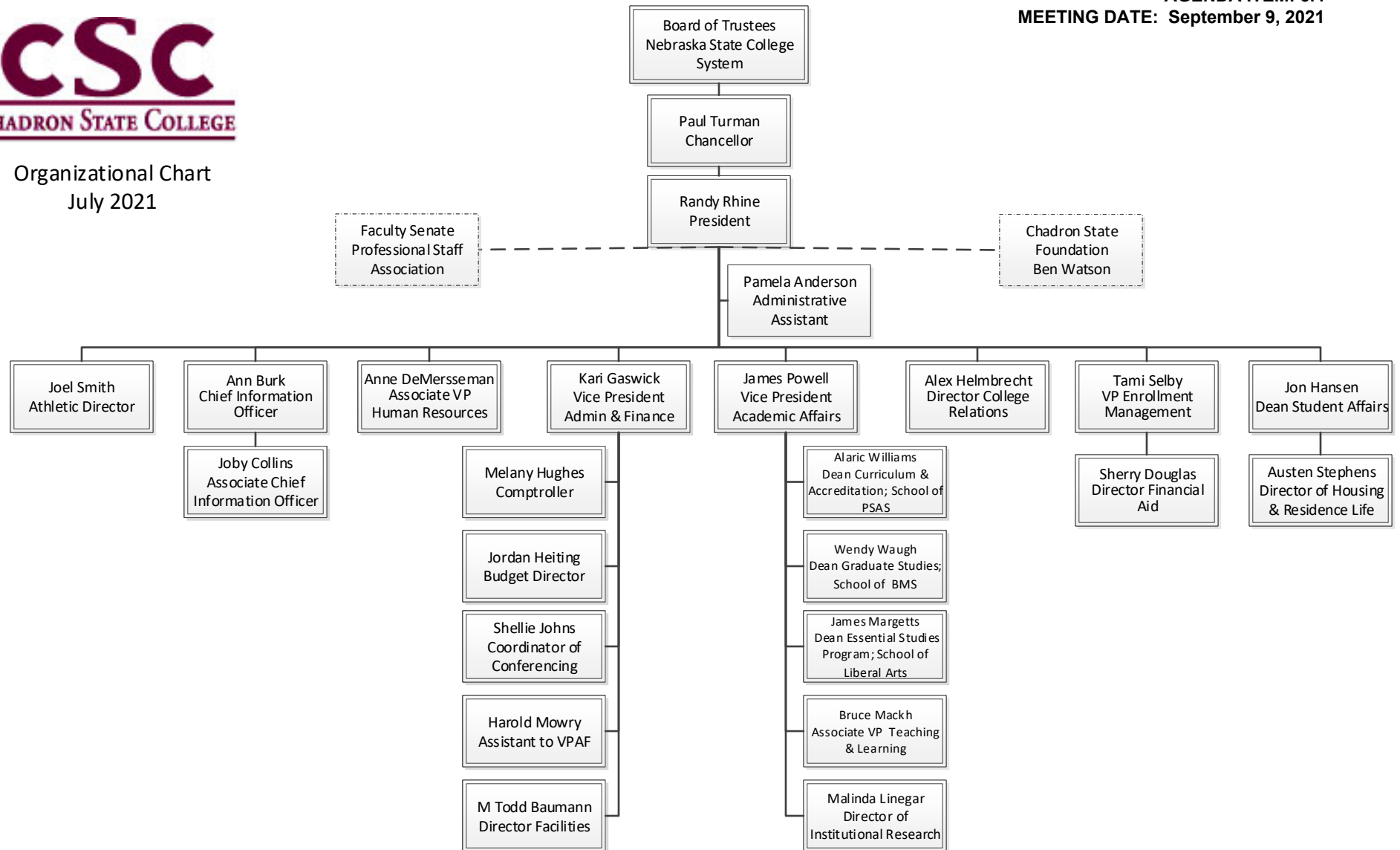
- Director of Student Activities from Director of Student Activities & Student Center

ATTACHMENTS:

- CSC Org Chart with Revisions (PDF)
- PSC Organizational Chart with Revisions (PDF)
- WSC Org Chart with Revisions (PDF)

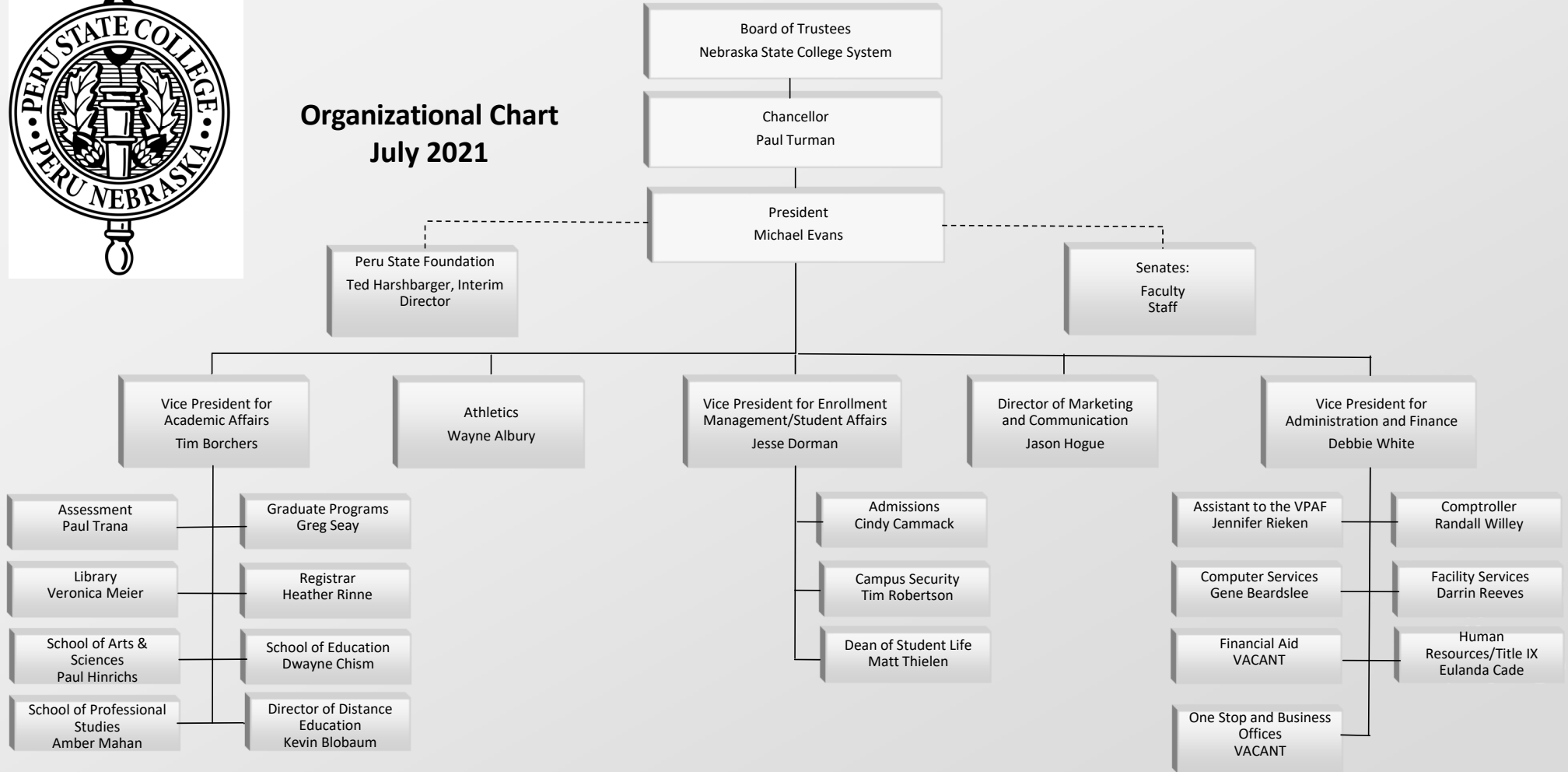


Organizational Chart
July 2021





Organizational Chart July 2021





Organizational Chart

